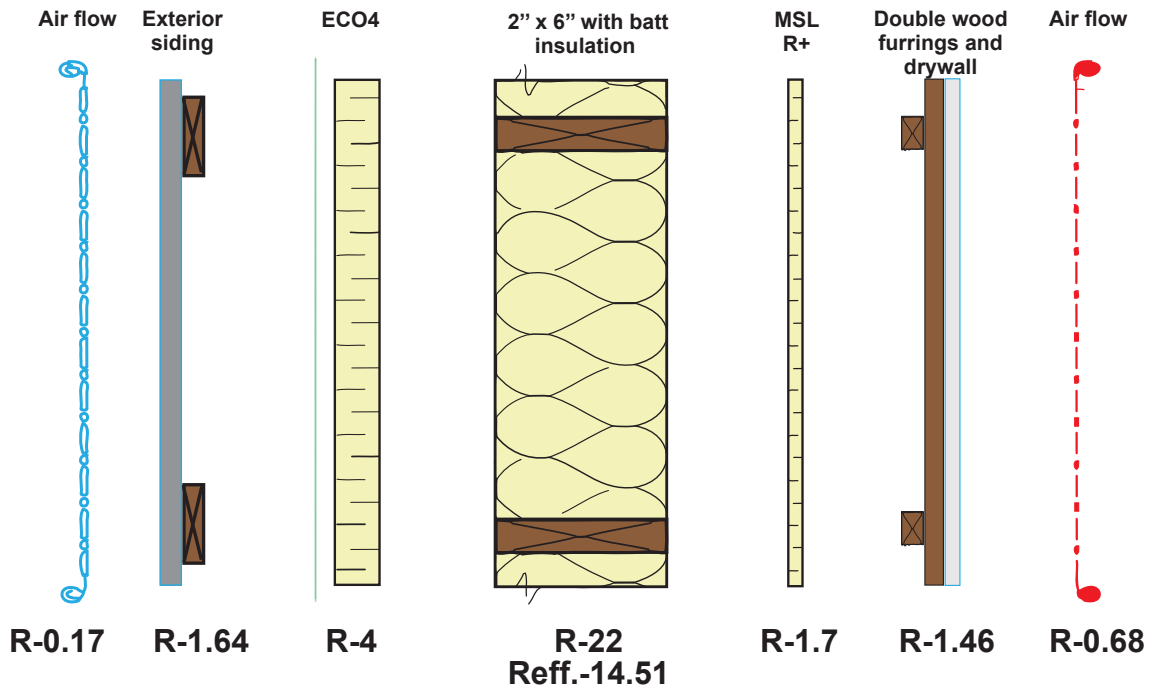


Exterior Wall

Composition:	R* Value	RSI* Value
Outside air flow	0.17	0.03
Siding	0.62	0.11
Furrings 19.5 mm (0.75 in) or air space 25 mm (1 in)	1.02	0.18
**Weather barrier / Air barrier with a water vapor permeability of 20 Perms and more	0.00	0.00
SONOclimat ECO4 38 mm (1.5 in)	4.00	0.70
Stud 38 x 140 mm (2 x 6 in) at 406 mm (16 in) o.c. with batt insulation 140 mm (5.5 in)	22.00	3.87
MSL R+ (vapor barrier panel)	1.70	0.30
Double wood furrings 39 mm (1.5 in)	1.02	0.18
Drywall 12.7 mm (0.5 in)	0.44	0.08
Inside air flow	0.68	0.12

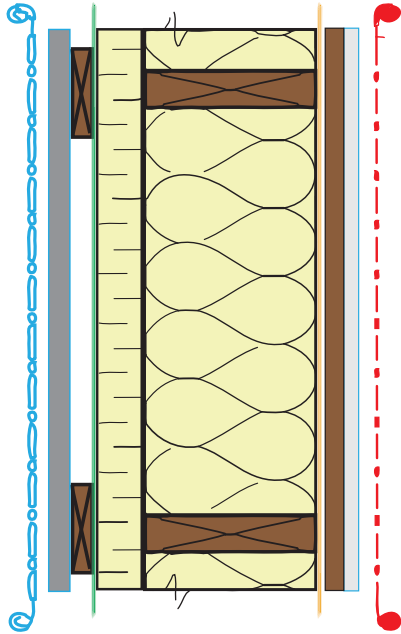
*R value and RSI based on the total thickness of the product.

**A weather barrier or an air barrier with a water vapor permeability of 20 Perms or higher must be used with SONOclimat ECO4



R total = 31.65 (RSI = 5.57)

R effectives = 24.16 (RSI = 4.26)

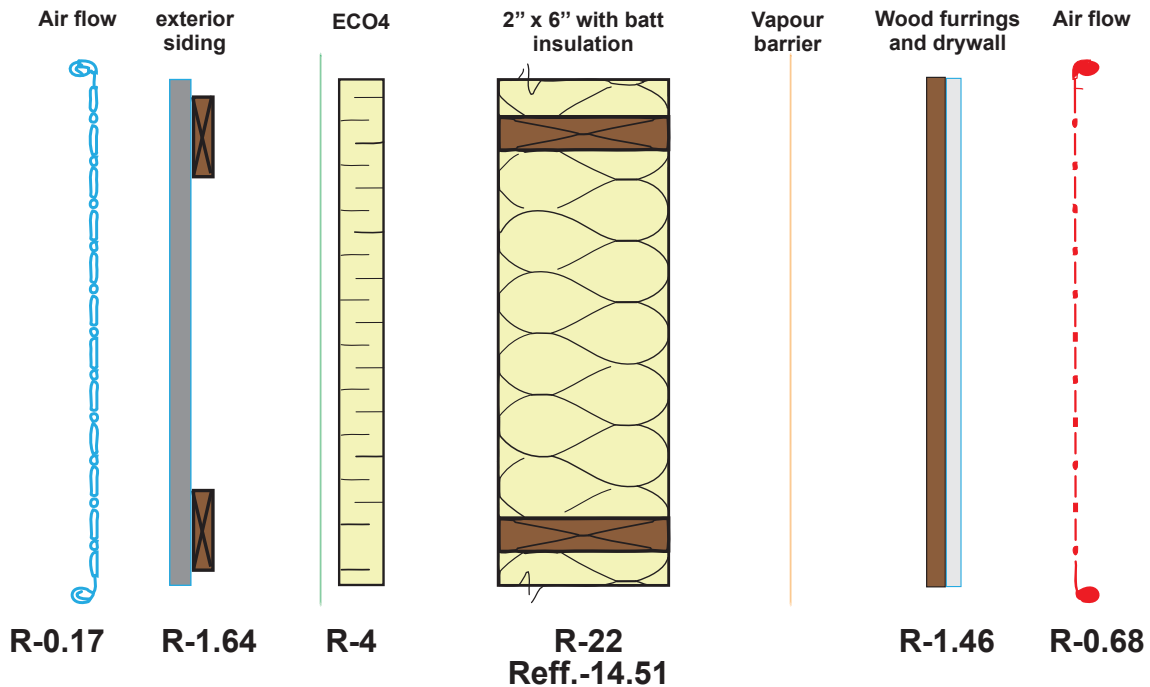


Exterior Wall

Composition:	R* Value	RSI* Value
Outside air flow	0.17	0.03
Siding	0.62	0.11
Furrings 19.5 mm (0.75 in) or air space 25 mm (1 in)	1.02	0.18
**Weather barrier / Air barrier with a water vapor permeability of 20 perms and more	0.00	0.00
SONOclimat ECO4 38 mm (1.5 in)	4.00	0.70
Stud 38 x 140 mm (2 x 6 in) at 406 mm (16 in) o.c. with batt insulation 140 mm (5.5 in)	22.00	3.87
Polythene Vapor Barrier	0.00	0.00
Wood furrings 19.5 mm (0.75 in)	1.02	0.18
Drywall 12.7 mm (0.5 in)	0.44	0.08
Inside air flow	0.68	0.12

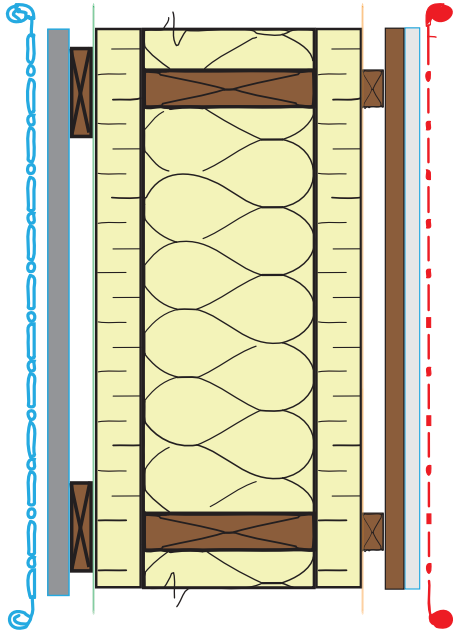
*R value and RSI based on the total thickness of the product.

**A weather barrier or an air barrier with a water vapor permeability of 20 perms or higher must be used with SONOclimat ECO4



R total = 29.95 (RSI = 5.28)

R effectives= 22.46 (RSI = 3.97)

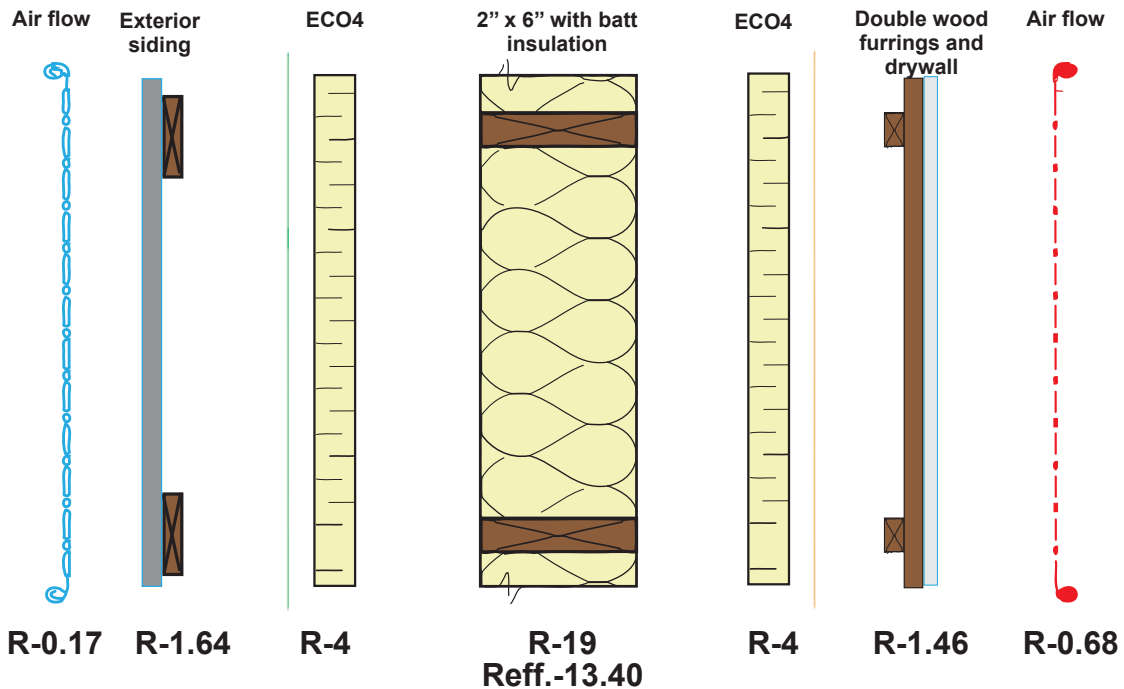


Exterior Wall

Composition:	R* Value	RSI* Value
Outside air flow	0.17	0.03
Siding	0.62	0.11
Furrings 19.5 mm (0.75 in) or air space 25 mm (1 in)	1.02	0.18
**Weather barrier / Air barrier with a water vapor permeability of 20 perms and more	0.00	0.00
SONOclimat ECO4 38 mm (1.5 in)	4.00	0.70
Stud 38 x 140 mm (2 x 6 in) at 406 mm (16 in) o.c. with batt insulation 140 mm (5.5 in)	19.00	3.36
SONOclimat ECO4 38 mm (1.5 in)	4.00	0.70
Vapor barrier	0.00	0.00
Double wood furrings 39 mm (1.5 in)	1.02	0.18
Drywall 12.7 mm (0.5 in)	0.44	0.08
Outside air flow	0.68	0.12

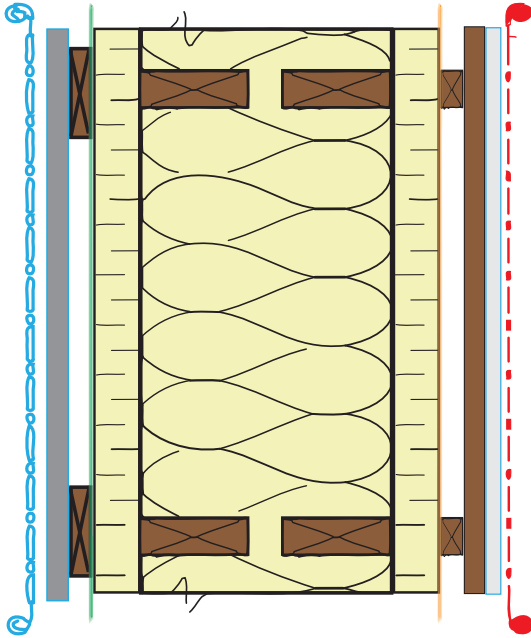
*R value and RSI based on the total thickness of the product.

**A weather barrier or an air barrier with a water vapor permeability of 20 perms or higher must be used with SONOclimat ECO4



R total = 30.95 (RSI = 5.45)

R effectives = 25.35 (RSI = 4.47)

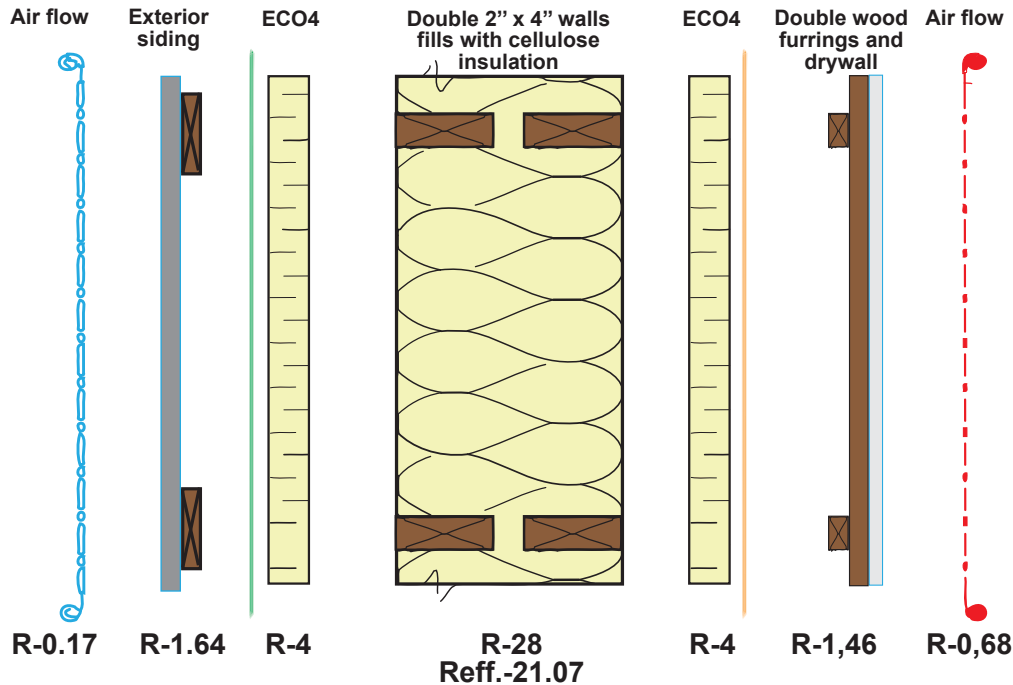


Exterior Wall

Composition:	R* Value	RSI* Value
Outside air flow	0.17	0.03
Siding	0.62	0.11
Furrings 19.5 mm (0.75 in) or air space 25 mm (1 in)	1.02	0.18
**Weather barrier / Air barrier with a water vapor permeability of 20 Perms and more	0.00	0.00
SONOclimat ECO4 38 mm (1.5 in)	4.00	0.70
Stud 38 x 90 mm (2 x 4 in) at 406 mm (16 in) o.c. with cellulose insulation 90 mm (3.5 in)	12.20	2.15
Air space 25.4 mm (1 in) fills with cellulose insulation	3.61	0.64
Stud 38 x 90 mm (2 x 4 in) at 406 mm (16 in) o.c. with cellulose insulation 90 mm (3.5 in)	12.20	2.15
SONOclimat ECO4 38 mm (1.5 in)	4.00	0.70
Vapor barrier	0.00	0.00
Double wood furrings 39 mm (1.5 in)	1.02	0.18
Drywall 12.7 mm (0.5 in)	0.44	0.08
Outside air flow	0.68	0.12

*R value and RSI based on the total thickness of the product.

**A weather barrier or an air barrier with a water vapor permeability of 20 Perms or higher must be used with SONOclimat ECO4



R total = 39.95 (RSI = 7.04)

R effectif = 33.02 (RSI = 5.81)