



PRODUIT DE COMPOSITE DE PIERRE  
STONE PRODUCT COMPOSITE



Kelowna



STC: 72/ IIC: 62

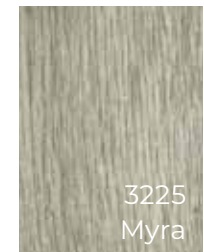
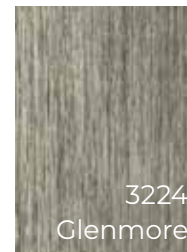
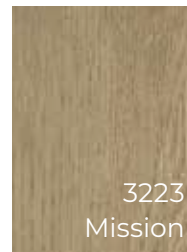
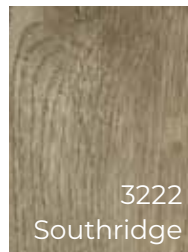
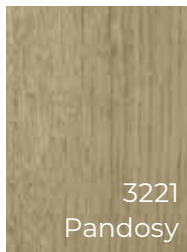
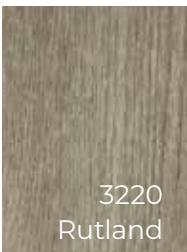
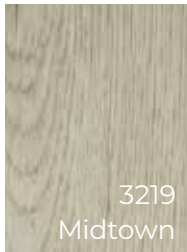
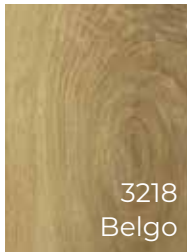
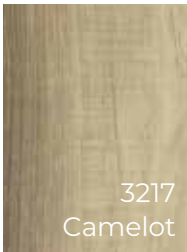


AUCUN FORMALDÉHYDE & AUCUN PHTALATE  
NO FORMALDEHYDE & NO PHTHALATE



CERTIFIED BY  
SCS GLOBAL SERVICES

3225 - Couleurs à titre indicatif seulement  
3225 - Actual products may vary from colours shown



Code Goodfellow: 725-42

Plancher SPC 4,2 mm (0,3 mm) x 6" x 48" avec membrane EVA 1 mm intégrée  
4.2 mm (0.3 mm) x 6" X 48" SPC flooring including 1 mm EVA pad attached

Fini texturé avec v-joints  
Textured finish with micro-bevels

Garantie résidentielle de 25 ans  
25-Year residential warranty

Installation flottante avec système i4F « Drop Lock® »  
Floating installation with i4F "Drop Lock®" system

Garantie commerciale de 3 ans  
3-Year commercial warranty

Plus stable que le vinyle  
More stable than LVT

Produit résistant à l'eau\*  
Waterproof product\*

Installer à tous les niveaux  
Install on all levels

27,93 pi ca / boîte - 45 boîtes - 1256,85 pi ca / palette  
27.93 sq. ft. / box - 45 boxes - 1256.85 sq. ft. / pallet

\* Peut être installé sur un plancher radiant à l'eau. Veuillez vous référer au guide d'installation.  
\* Can be installed over water radiant heated floors. Please refer to installation instructions.