

STONE PRODUCT COMPOSITE (SPC) FLOORING INSTALLATION INSTRUCTIONS



PLEASE READ THE ENTIRE INSTALLATION INSTRUCTIONS
BEFORE PROCEEDING WITH THE INSTALLATION

OWNER / INSTALLER RESPONSIBILITY

- The installer assumes all responsibility for **final inspection** of product quality. Inspection of the entire flooring should be done before installation. Carefully examine the flooring for color, finish and quality before installing. If the flooring is not acceptable, contact your dealer immediately.
- If the installer doubts the manufacturing or finishing quality, he or she should not install it. Once the board is installed, it is considered as acceptance by the installer and the owner, even if the installation instructions guide is absent from the box at the time of installation.

Goodfellow cannot be held liable for improper installation of its products or poor judgement by the installer. Goodfellow assumes no labour or installation charges.

JOB SITE INSPECTION & PREPARATION (BEFORE INSTALLATION)

- This type of flooring can be installed below, equal or above ground level.
- All work involving water or moisture (plumbing, acoustical ceilings, dry wall taping, etc.) should be completed prior to floor installation.
- Room temperature should be greater than 10 °C (50 °F) during installation. Flooring must be installed in a temperature-controlled environment, only allowing temperature changes after installation is completed.
- Temperature after installation should be kept between -60°C (-76°F) and 60°C (140°F)
- Ensure that all cartons contain the correct product.
- Product should be always stored in boxes horizontally; never store boxes on their sides. Protect corners of boxes from getting damaged.
- Handle the product with care.
- SPC is a very dense product. This results in durability, but the product is heavy. Use care and proper lifting methods when handling SPC planks.
- Always install your flooring in bright daylight to observe any imperfections such as sheen differences.
- Visually inspect all planks for any visible defects or damage prior to and during installation. Do not install any damaged planks. Goodfellow Inc. will not be held responsible for any costs related to installation of unsatisfactory product.
- When installing, open several cartons at a time and use a mixture of planks from different cartons for best results and appearance.
- Floating floors require freedom to experience expansion and contraction without binding or rubbing on vertical surfaces. Bedrooms and halls must be isolated from other rooms by using a transition molding. (Ex: bedrooms adjacent to hallway or living room adjacent to hallway, etc.) Be sure to leave 6 mm (1/4") around the perimeter. Do not exceed 60' spans without an expansion joint and transition moulding.

IMPORTANT

- This Collection is guaranteed for use only as a floor covering.
- This Collection is intended for indoor use only.

STONE PRODUCT COMPOSITE (SPC) FLOORING INSTALLATION INSTRUCTIONS



MATERIALS REQUIRED

- Tape Measure
- Utility Knife
- Circular Saw or Flooring Cutter
- Rubber Mallet
- Spacers
- Ruler & Pencil

CALCULATING AMOUNT OF FLOORING REQUIRED

Measure the room to calculate how much flooring to purchase. To calculate surface coverage, multiply the length by the width of the room (adding the area of any closets). Add 5-10% to total surface area to account for trimming. Goodfellow recommends keeping a few planks of your new flooring for replacement in the event any planks should be damaged.

ACCLIMATION

SPC is required to acclimate to the environment in which it will be used prior to installation. During acclimation heat and air conditioning should be functional to maintain a temperature between 10°C (50°F) and 60°C (140°F). Flooring must be acclimated and installed in a temperature-controlled environment, only allowing temperature changes after install is fully completed.

NOTE: SPC is meant to be installed using a floating method only. Adhesive is not to be used with this product.

SUBFLOORS

This Goodfellow Collection cannot be installed over any other pre-existing floors. Make sure the surface is structurally sound, clean, and dry. Floor must be level to 4.7mm per 3m radius (3/16" per 10-foot radius). We recommend that you install the SPC through joists

Maximum deflection should be no more than 1.1mm (3/64"). Substrate must be free of debris, dust, paint, varnish, wax, grease/oils, curing sealers, solvents and other contaminants. Any adhesive residue from prior flooring installations should be removed completely. When preparing substrate do not use products with citrus oils, solvents, or petroleum, as these can stain and cause expansion damage in SPC flooring.

Goodfellow SPC is waterproof itself but is not for use as moisture barrier. SPC Flooring should never be glued.

RADIANT-HEATED SUBFLOOR

Goodfellow's SPC can be installed over electric or water radiant heat systems. You must follow the manufacturer's recommendations.

WOOD SUBFLOOR

Loose plywood boards and/or squeaking must be repaired prior to installation. To do so, it is recommended to screw or nail every 15cm (6") on joists. Ensure the surface is structurally sound, clean, and dry. Floor must be level to 4.7mm per 3m radius (3/16" per 10-foot radius). Maximum deflection should be no more than 1.1mm (3/64"). To ensure this all indents from fasteners and joints should be leveled and smoothed using a suitable compound.

CONCRETE SUBFLOOR

Concrete subfloors must be fully inspected before installation. If they do not meet the following requirements, do not install new flooring otop. Concrete must have a compressive strength rated 3500 psi or higher. Curing agents/hardeners should not be used as they could cause bonding failure. Floor must be level to 4.7mm per 3m radius (3/16" per 10-foot radius). Maximum deflection should be no more than 1.1mm (3/64"). To ensure this all indents from fasteners and joints should be leveled and smoothed using a suitable compound.

STONE PRODUCT COMPOSITE (SPC) FLOORING INSTALLATION INSTRUCTIONS



Concrete subfloors must be completely dry for at least 60 days prior to installing new flooring and moisture levels should be tested. The moisture vapor emission rate should not exceed 2.27 kg/92.9 sqm (5 lb/1000 sq ft) per 24 hours, as per ASTM F1869. If using the ASTM F2170 test method, the internal relative humidity must be below 80%, and pH level must be between 7 and 9. If either alkalinity or moisture results are not suitable, a 6-mil minimum polyethylene plastic moisture barrier must be applied prior to installation of SPC.

OTHER TYPES OF SUBFLOORS / UNDERLAYMENTS

No additional underlayment is required. However, this SPC can be installed over ultra-high density underlay up to 1.5mm. Always use the floating method. We recommend the UHD (Ultra High Density) underlay. This will provide additional sound transmission ratings.

Heavy objects such as kitchen cabinets or islands ***must never be*** installed over this Goodfellow SPC flooring.

When removing old residue prior to installing SPC, DO NOT USE solvents or citrus based removers as these may damage or stain the new flooring.

DO NOT INSTALL OVER

- Any hardwood floors.
- Any other product resting directly on plywood or concrete.
- Carpet
- Pre-Existing vinyl floors
- Floating floor of any type, loose lay, and perimeter fastened vinyl sheets.

PREPARATION

1. Decide which direction the planks will be installed (it is recommended that Goodfellow SPC be installed running parallel to the longest wall).
2. If required, use a suitable compound to fill in any cracks or holes in the subfloor. Ensure the surface is structurally sound, clean, and dry. Floor must be level to 4.7mm per 3m radius (3/16" per 10-foot radius). Maximum deflection should be no more than 1.1mm (3/64").
3. Make sure a 6mm (1/4") space must be left between walls and other obstructions such as pipes, stairs, pillars, etc. Trim mouldings can be used to cover these spaces after installation is complete. When measuring to install around pipes, drill holes 12mm (1/2") larger than the pipes.
4. When possible avoid placing joints of SPC overtop of joints/seams of subfloor. End joints of boards should be staggered at least 18cm (7") apart. Plan layout such that beginning, and end of rows are greater than 30cm (12") in length. Also check layout before beginning installation for planned width of final row: this should not be less than 5cm (2"). If so, make adjustments to width of first row so that both first and last will be wider than 5cm (2").
5. Do not install over expansion joints.
6. Remove thresholds, baseboards, and the existing flooring if necessary. If the pre-existing floor surface is smooth and solid you may choose to skip this step (please see substrate requirements listed above). Door trim should be undercut for best results, allowing SPC to move without being pinched. After performing these preparations vacuum/sweep installation area to remove debris and dust.

STONE PRODUCT COMPOSITE (SPC) FLOORING INSTALLATION INSTRUCTIONS



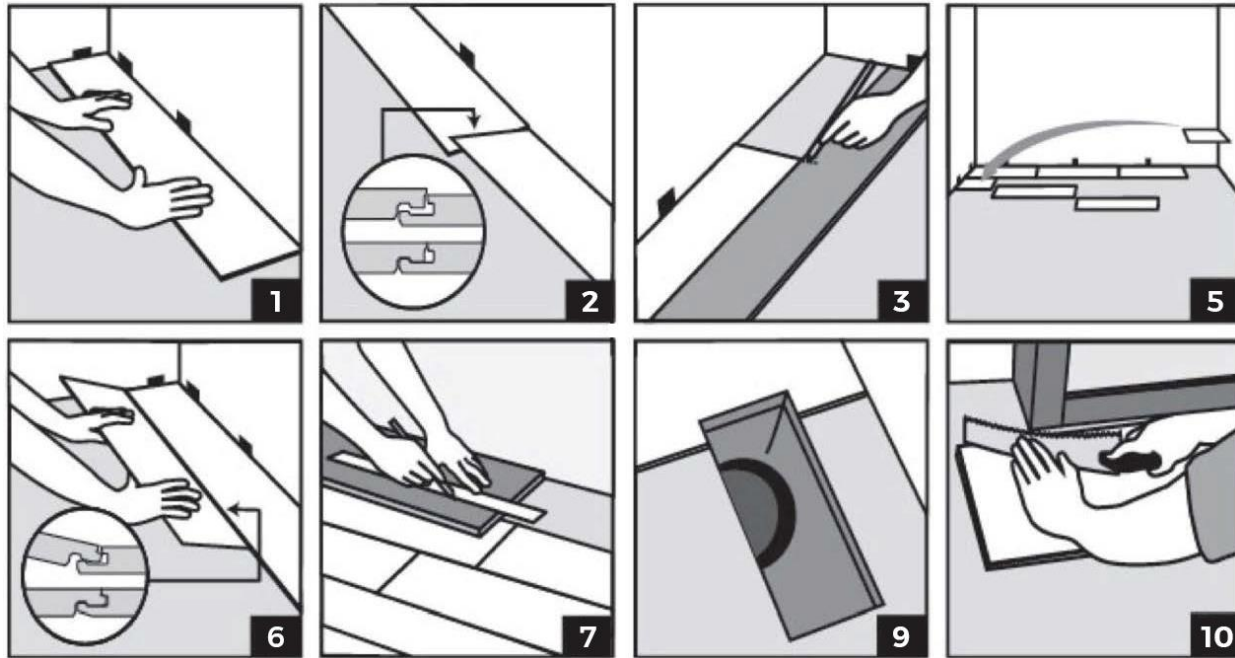
INSTALLATION

1. Once subfloor is fully cleaned and prepared, begin with laying planks left to right for first row. Place first plank so grooved edge is facing towards you. Place board 6mm (1/4") from left wall. Use spacers between wall and plank.
2. For the second board in the first row, lay the board interlocking with the first end-to-end and fold it down to lock together. These should be same height if laid properly. Ensure both are perfectly aligned. Continue in same method towards right hand wall.

NOTE: *If both boards are not same height or are not locked properly together follow the directions at bottom of guide of "TO UNINSTALL". Remove board(s) and check for debris obstructing the lock and grooves. If the end joints are not properly lined up, trying to force the boards together will permanently damage end joints.*

3. For final board of first row ensure to measure length required to allow 6mm (1/4") gap for expansion between plank and right-hand wall.
4. To cut board place facing upwards. Using a sharp utility knife and ruler, cut pushing firmly several times on the same line. This will not cut through the board but will cut deeply. Then place one hand close to the cut and push down firmly and use other hand to lift the other half of the plank. The board should split naturally at the cut mark.
5. Beginning the second row, use remainder of cut plank from last piece of first row, provided piece is minimum 30cm (12"). Otherwise cut a new plank to begin this row, ensuring joints are at least 18cm (7") apart. Use the remainder of cut planks for ends of rows to begin subsequent rows whenever possible.
6. Click together the long sides of the new plank and the one in the previous row, placing the board tightly to the short end of the previous plank in this row with an angle of 30° and drop the plank to lock together. These should be same height if laid properly. Ensure both are perfectly aligned.
7. After installing 2 or 3 rows check the straightness using a string line. If the planks are not running straight, it may be caused by unevenness in the starting wall. The first row may require to be re-trimmed to adjust accordingly.
8. For final row, lay a plank of SPC directly on top of last completed row. Place another board on top, touching the tongued side of the plank against the final wall. Trace a line along the edge of this piece marking the first board. Then cut along the edge of this piece to mark the first board. Cut using this line to get required width of board. Insert this cut board against the final wall. The final row should be a minimum of 5cm (2") in width. Spacers can then be removed.
9. When measuring for holes for pipes, use the diameter of the pipe and cut a hole 12mm (1/2") larger. Holes for pipes: measure the diameter of the pipe and drill a hole that is 1/2" (12mm) larger. Saw off a piece and install the board around the pipe. Then lay sawed-off piece of board in place.
10. When installation is complete, replace moulding, allowing a slight clearance between moulding and SPC. Attach moulding to walls, not to the flooring. For areas where SPC meets other flooring types use T-moulding to cover exposed edges. Do not pinch SPC with moulding and allow a small space between surfaces.

STONE PRODUCT COMPOSITE (SPC) FLOORING INSTALLATION INSTRUCTIONS



TO UNINSTALL

Lift an entire row of SPC carefully and gently at an angle. To remove individual boards, leave flat on ground and slide them apart. If boards do not separate easily lift the planks at a slight angle when sliding apart.

STONE PRODUCT COMPOSITE (SPC) FLOORING INSTALLATION INSTRUCTIONS



MAINTENANCE (SPC FLOORS)

- Clean dust and debris regularly using a broom or vacuum with soft bristles.
- Clean any spills or liquids immediately.
- Mop as needed using a dampened mop and cleaner approved for use on vinyl floor.
- Never use abrasive cleaning implements, waxes, bleach or any acid products on SPC.
- Use felt protectors or other protective devices under furniture, particularly items that are frequently moved. Any furniture with casters should not have ball casters. Only wide, non-staining rubber casters are to be used on SPC. Use protective mats underneath office chairs.
- Do not drag heavy objects or furniture across floor. When moving appliances or furniture, lay a protective item such as cardboard onto the SPC and walk the heavy item across carefully.
- Place mats at exterior doors to reduce dirt and debris tracked onto floor. Do not use mats with rubber or latex backers as they may cause discoloration or staining.
- Never walk or create flooring movement at temperatures below 5°C (41°F).

GOODFELLOW'S LIMITED WARRANTY COVERS THE FOLLOWING :

- **WILL BE FREE OF MANUFACTURING DEFECTS**
- **WILL NOT WEAR OUT, DELAMINATE OR FADE**
- **THE WARRANTY IS APPLIED TO THE ORIGINAL PURCHASER AND IS NOT TRANSFERABLE**

THE LIMITED WARRANTY DOES NOT COVER THE FOLLOWING

- Discoloration from mold or from flooding, floods, leaking plumbing or appliances, water entering through sliding glass doorways, as well as floor covering failure due to hydrostatic pressure or moisture vapor emission.
- Problems due to improper installation
- Change of gloss level, dulling, scratching, cutting, scuffing, or chipping
- Damage caused by pets
- Problems due to accidents, abuse or improper usage
- Damage occurring during renovation or construction
- Labour is not covered by this warranty

OTHERS

To sustain warranty and ensure quick and easy service in the event of a claim, the following requirements must be met:

- Flooring must be installed according to Goodfellow's Installation Instructions.
- Use appropriate and safe vinyl floor cleaning products.
- Retain five planks of the Goodfellow SPC product that was used after installation for possible testing purposes.
- Retain and be able to provide the original sales receipt (or documentation confirming proof of purchase and details of purchase and installation date of the product.